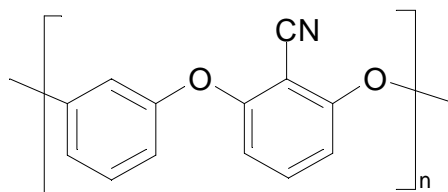


## G-PAEN™

**Product :** Polyarylether Nitrile

**CAS No :** 111867-27-7

**Structure:**



**Availability:** As powder, granules, 20% and 30% glass filled and 20 and 30% carbon filled material.

### Properties

Glass Transition Temperature °C	148
Melting Point Tm °C	338
Crystallinity %	>40
Tensile Strength MPa	>95
Tensile Modulus MPa	> 3600
Elongation at Break %	>5
Flexural Strength MPa	>180
Flexural Modulus MPa	>3800
Izod Impact Strength J / M (notched)	>45
Rockwell Hardness D - 785	114
HDT (1.84 MPa) in °C	165
Flammability UL 94 (0.8 mm thickness)	V – 0

### **APPLICATIONS OF G-PAEN™**

G-PAEN™ combines high temperature stability, strength and stiffness and ease of processing. It is also chemically resistant and electrically insulating. It has excellent abrasion resistance and good self lubricating properties. It has inherently low flammability.

It is used for

- shafts and bearing for high load requirement
- ultra small precision rotational parts.
- low warp grades for jigs and parts
- printing machine parts